



INDOFINE Chemical Company, Inc.

121 Stryker Lane, Bldg. 30, Suite 1 • Hillsborough, NJ 08844 • U.S.A.

Phone: (908) 359-6778 • FAX: (908) 359-1179

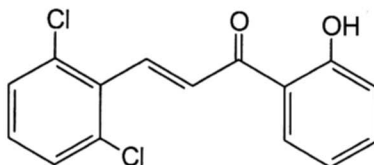
website: www.indofinechemical.com

e-mail: chemical@indofinechemical.com

CERTIFICATE OF ANALYSIS

CAT. No.: 19-376

<u>Product Name:</u>	2,6-DICHLORO-2'-HYDROXYCHALCONE
<u>Lot Number:</u>	0102028
<u>CAS Number:</u>	[73110-44-8]
<u>Chemical Formula:</u>	C ₁₅ H ₁₀ Cl ₂ O ₂
<u>MW:</u>	293.15
<u>Melting Point:</u>	101-102.5°C
<u>Appearance:</u>	Yellow powder
<u>TLC:</u>	Hexane:Ethyl acetate (8:2)
<u>Solubility:</u>	Soluble in chloroform
<u>Purity(HPLC):</u>	99.89%





INDOFINE Chemical Company, Inc.

121 Stryker Lane, Bldg. 30, Suite 1 • Hillsborough, NJ 08844 • U.S.A.

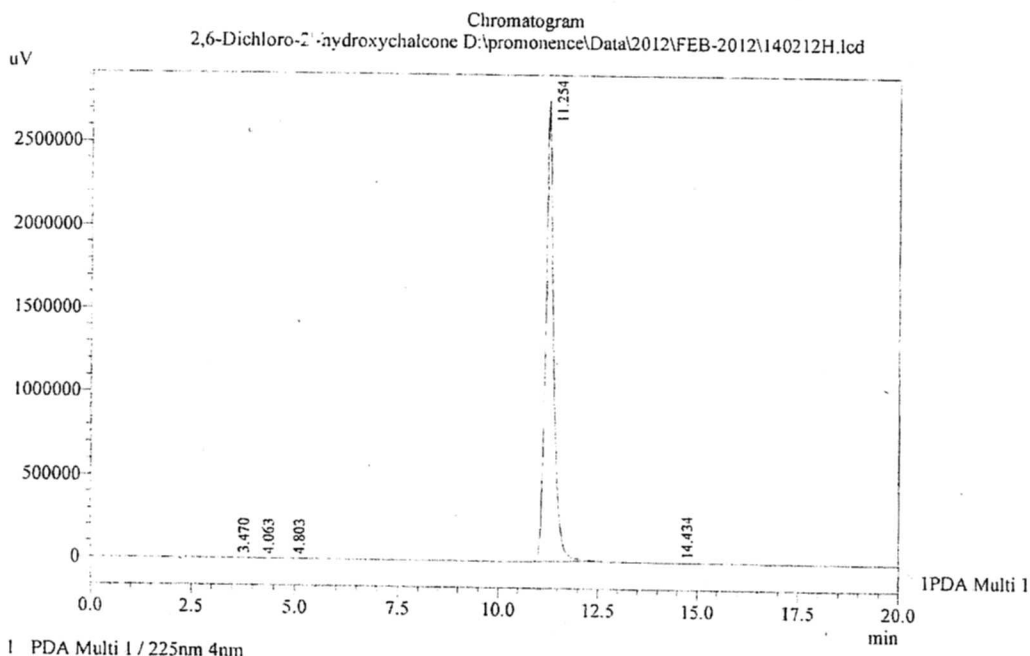
Phone: (908) 359-6778 • FAX: (908) 359-1179

website: www.indofinechemical.com

e-mail: chemical@indofinechemical.com

HPLC ANALYSIS

Acquired by	: Sanjeev	Catalog No.:	19-376
Sample Name	: 2,6-Dichloro-2'-hydroxychalcone	Product name:	2,6-Dichloro-2'-hydroxychalcone
Sample ID	: Lot No:-0102028	Lot No.:	0102028
Injection Volume	: 20 uL		
Data Filename	: 140212H.lcd		
Method Filename	: Linear Isocratic.M.lcm		
Date Acquired	: 2/14/2012 2:33:10 PM		
Data Processed	: 2/14/2012 2:53:12 PM		
Column	: LUNA C-18(2), (250mm x4.6mm 5.0μ)		
Flow	: 1.000 mL/min.		
Mobile Phase	: A(20% of 0.05% TFA in water) B(80% of Acetonitrile)		



1 PDA Multi 1 / 225nm 4nm

PeakTable

PDA Ch1 225nm 4nm

Peak#	Name	Ret. Time	Area	Area %	Relative Retention Time
1	RT:3.470	3.470	16530	0.04	0.31
2	RT:4.063	4.063	5422	0.01	0.36
3	RT:4.803	4.803	15086	0.04	0.43
4	RT:11.254	11.254	39083723	99.89	1.00
5	RT:14.434	14.434	4366	0.01	1.28
Total			39125128	100.00	

ICC INDOFINE Chemical Company, Inc.

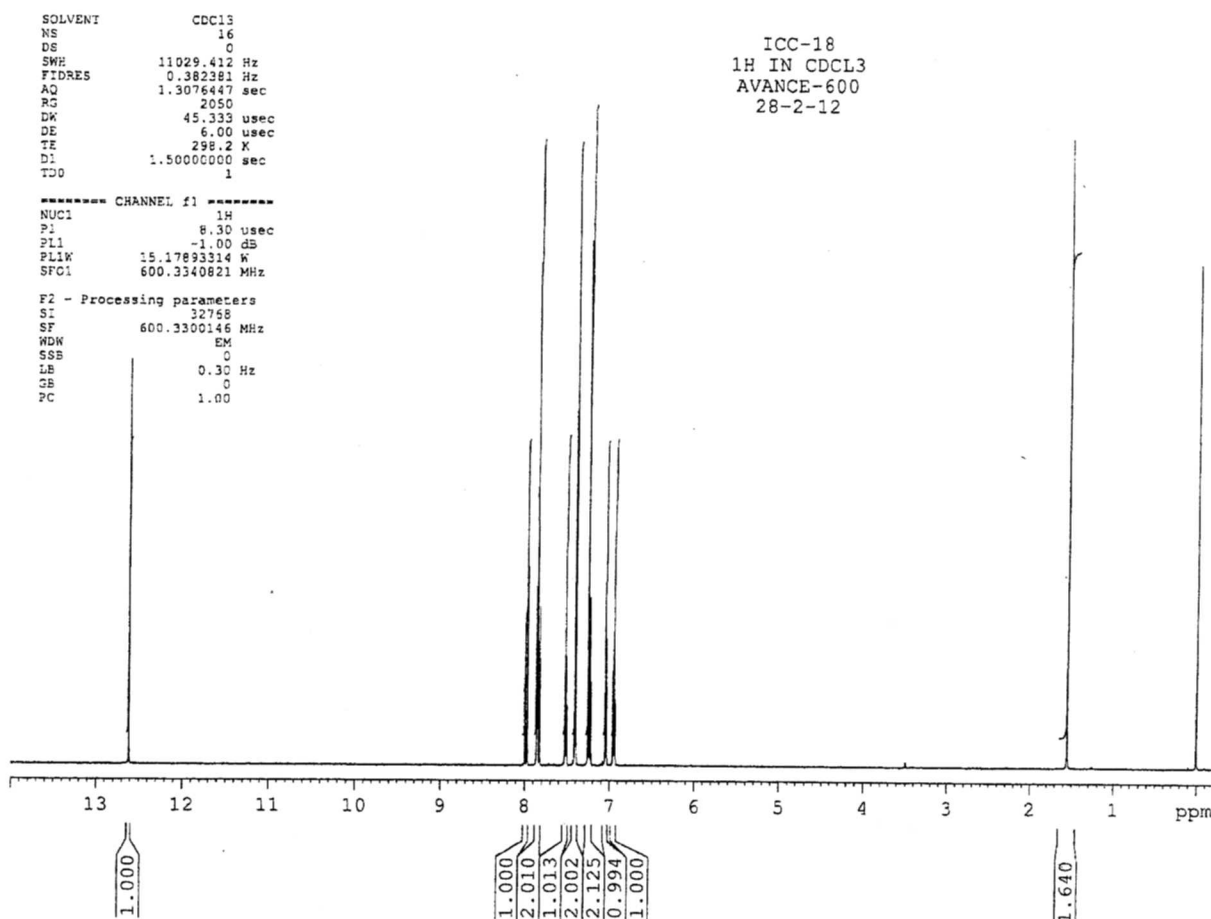
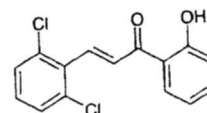
121 Stryker Lane, Bldg. 30, Suite 1 • Hillsborough, NJ 08844 • U.S.A.

Phone: (908) 359-6778 • FAX: (908) 359-1179

website: www.indofinechemical.com

e-mail: chemical@indofinechemical.com

Catalog No.: 19-376
Product name: 2,6-Dichloro-2'-hydroxychalcone
Lot No.: 0102028



ICC INDOFINE Chemical Company, Inc.

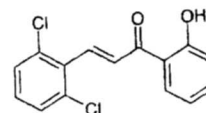
121 Stryker Lane, Bldg. 30, Suite 1 • Hillsborough, NJ 08844 • U.S.A.

Phone: (908) 359-6778 • FAX: (908) 359-1179

website: www.indofinechemical.com

e-mail: chemical@indofinechemical.com

Catalog No.: 19-376
Product name: 2,6-Dichloro-2'-hydroxychalcone
Lot No.: 0102028

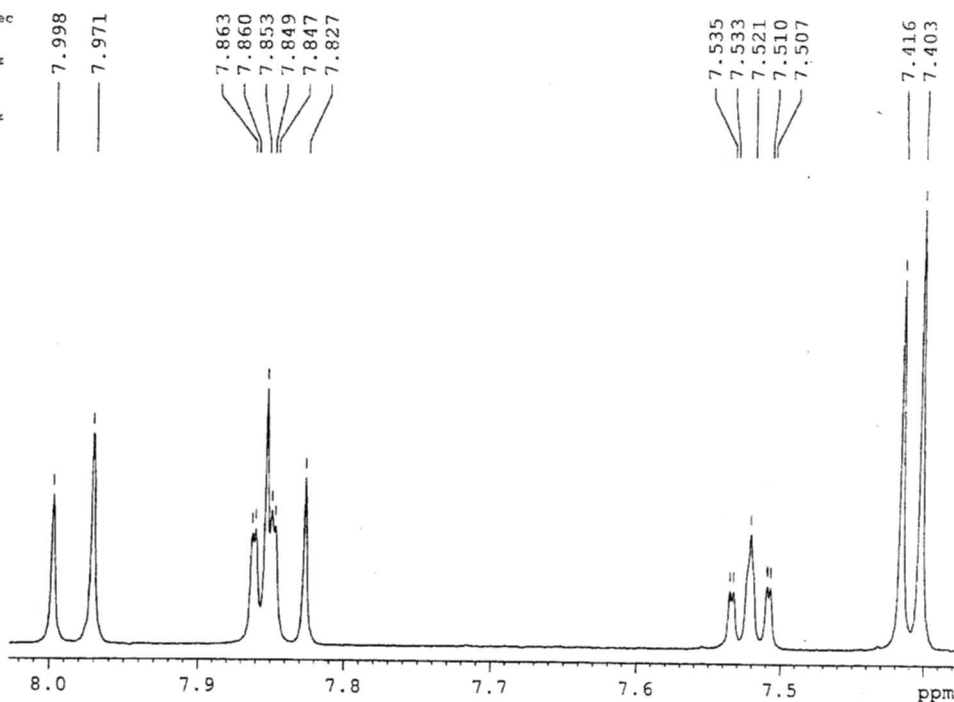


SOLVENT CDCL3
NS 16
DS 0
SWH 11029.412 Hz
FIDRES 0.382381 Hz
AQ 1.3076447 sec
RG 2050
DW 45.333 usec
DE 6.00 usec
TE 298.2 K
D1 1.50000000 sec
TD0 1

ICC-18
1H IN CDCL3
AVANCE-600
28-2-12

----- CHANNEL f1 -----
NUC1 1H
P1 8.30 usec
PL1 -1.00 dB
PL1W 15.17893314 W
SFO1 600.3340821 MHz

F2 - Processing parameters
SI 32768
SP 600.3300146 MHz
WCH EM
SSB 0
LB 0.30 Hz
GB 0
PC 1.00





INDOFINE Chemical Company, Inc.

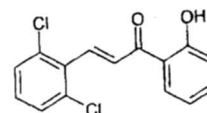
121 Stryker Lane, Bldg. 30, Suite 1 • Hillsborough, NJ 08844 • U.S.A.

Phone: (908) 359-6778 • FAX: (908) 359-1179

website: www.indofinechemical.com

e-mail: chemical@indofinechemical.com

Catalog No.: 19-376
Product name: 2,6-Dichloro-2'-hydroxychalcone
Lot No.: 0102028



SOLVENT CDC13
NS 16
DS 0
SWH 11029.412 Hz
FIDRES 0.382361 Hz
AQ 1.3076447 sec
RG 2050
DM 45.333 usec
DE 6.00 usec
TE 298.2 K
D1 1.50000000 sec
TDO 1

ICC-18
1H IN CDCL3
AVANCE-600
28-2-12

----- CHANNEL f1 -----
NUC1 1H
P1 8.30 usec
PL1 -1.00 dB
PL1W 15.17893314 W
SFO1 600.3340821 MHz

F2 - Processing parameters
SI 32768
SF 600.3300146 MHz
WDW EM
SSB 0
LB 0.30 Hz
GB 0
FC 1.00

